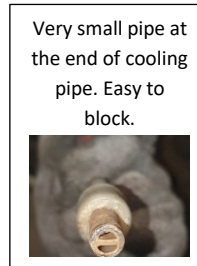


Topic: Flushing By Hafiz

980Oils Products	GREENEX R&S F1
Applications	Dies Flushing
Customer /Location	Nusa Metal, Jakarta
Lube/Fluids Existing	High pressure water
Process/Machines	Oil Separator Casting dies
Tank Capacity	40 liters
Customer Requirements	Faster water flow

Issue/Problems :

- Reject rate for oil separator production is above target.
- Existing dies cleaning and maintenance standard is not enough.



Very small pipe at the end of cooling pipe. Easy to block.

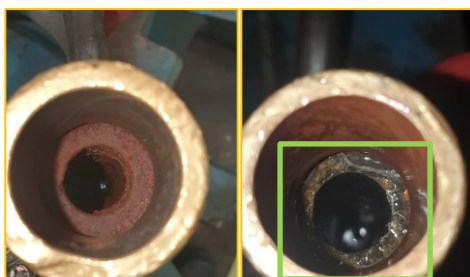
Solutions :

- 1) Use Greenex R&S F1 30% to break down rust and scale using close loop circulation.
- 2) Total flushing time: 3 hours. 1 hour circulation, 1 hour stop the machine while Greenex R&S F1 still inside dies, after that resume circulation for 1 hour.
- 3) Using water to clean after process.

Summary :

- Water flows faster 15-25 second, means water is cooling the dies faster when in casting production line.
- Greenex R&S F1 is safer to user, dies and to equipment.
- No water leaking because internal cooling dies is clean.

Cooling pipe before and after. The natural color of cooling pipe is resurface from rust and scale.



Water sample for Lab report and sludge after flushing dies process.

