

# RANDOMIX 3.0 & 4.0

AUTO TOP UP COOLANT

Presented By:  
**AGUS SALIM**



# Coolant Maintenance

---

Maintaining tight fluid concentration control ensures that fluid never becomes too lean or too rich.

(A lean concentration often leads to rust, bacterial infestation, and poor tool life; a too rich concentration often causes eye, nose, and skin irritation for the operator and simply is a waste of product)

We develop Randomix 3.0 using ZEBRA Proportional Pump to ensure consistent concentration under all types of conditions.



# Customer References

---

- ◆ AHM Plant 4 (5 lines for 55 machines)
- ◆ AHM Plant 3 (18 lines for 122 machines)
- ◆ AHM Plant 3A (5 lines for 72 machines)
- ◆ Showa Indonesia Mfg. (1 line for 83 machines)
- ◆ AHM Plant 5 (5 lines for 55 machines)
- ◆ YPMI (5 lines @ 7 machines)
- ◆ AKS (4 lines @ 21 machines)



# Feature and Benefit

## ◆ *FEATURES*

- ✓ for a wide range of concentrate viscosities
- ✓ unaffected by water pressure changes
- ✓ unaffected by level of concentrate in drums and totes
- ✓ feeds mixture through plant piping without an additional pump

## ◆ *BENEFITS*

- extremely accurate;
- reduces concentrate waste
- easy to install  
reliable and consistent
- nonelectrical  
adjustable



# How it works

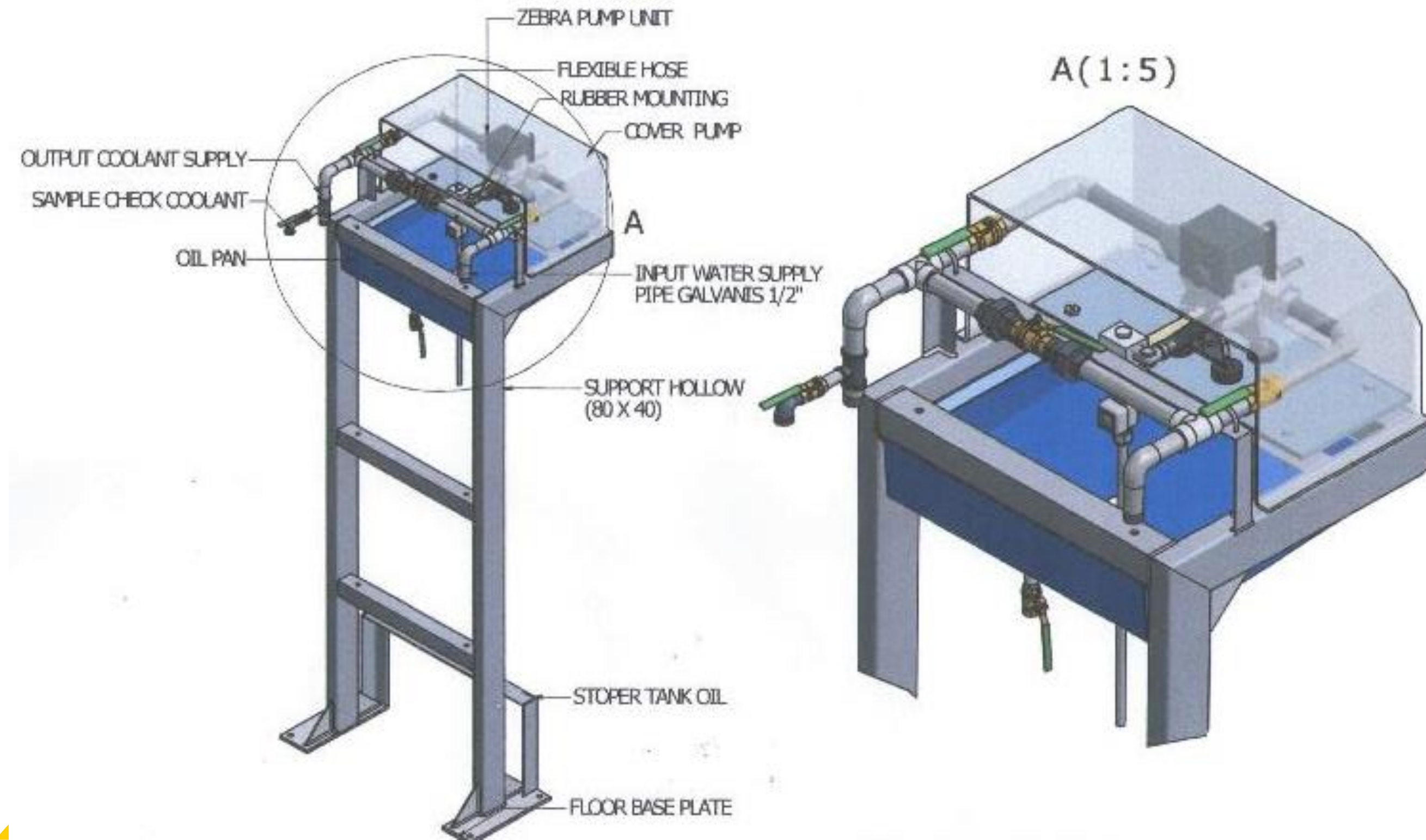
---

- 1. Pump support
- 2. Zebra Proportional Pump
- 3. Auto controller



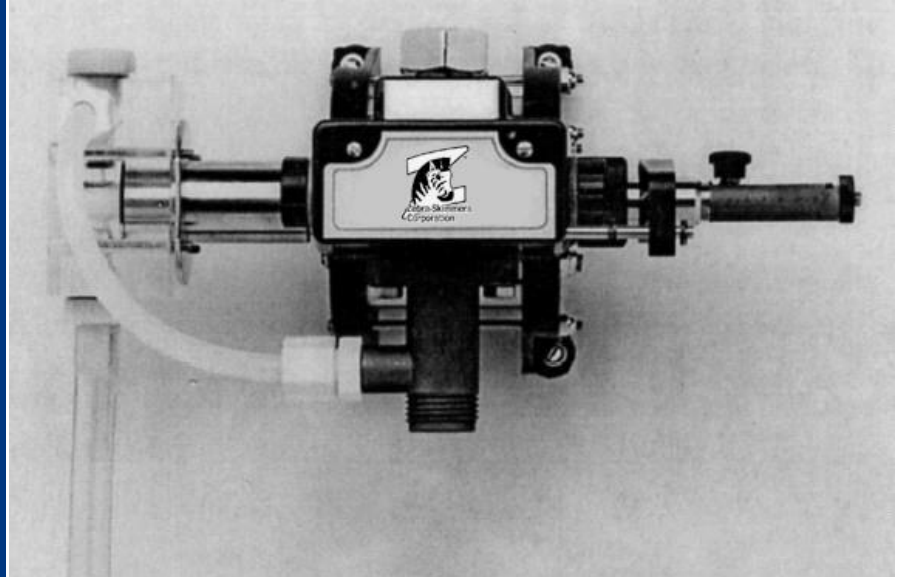
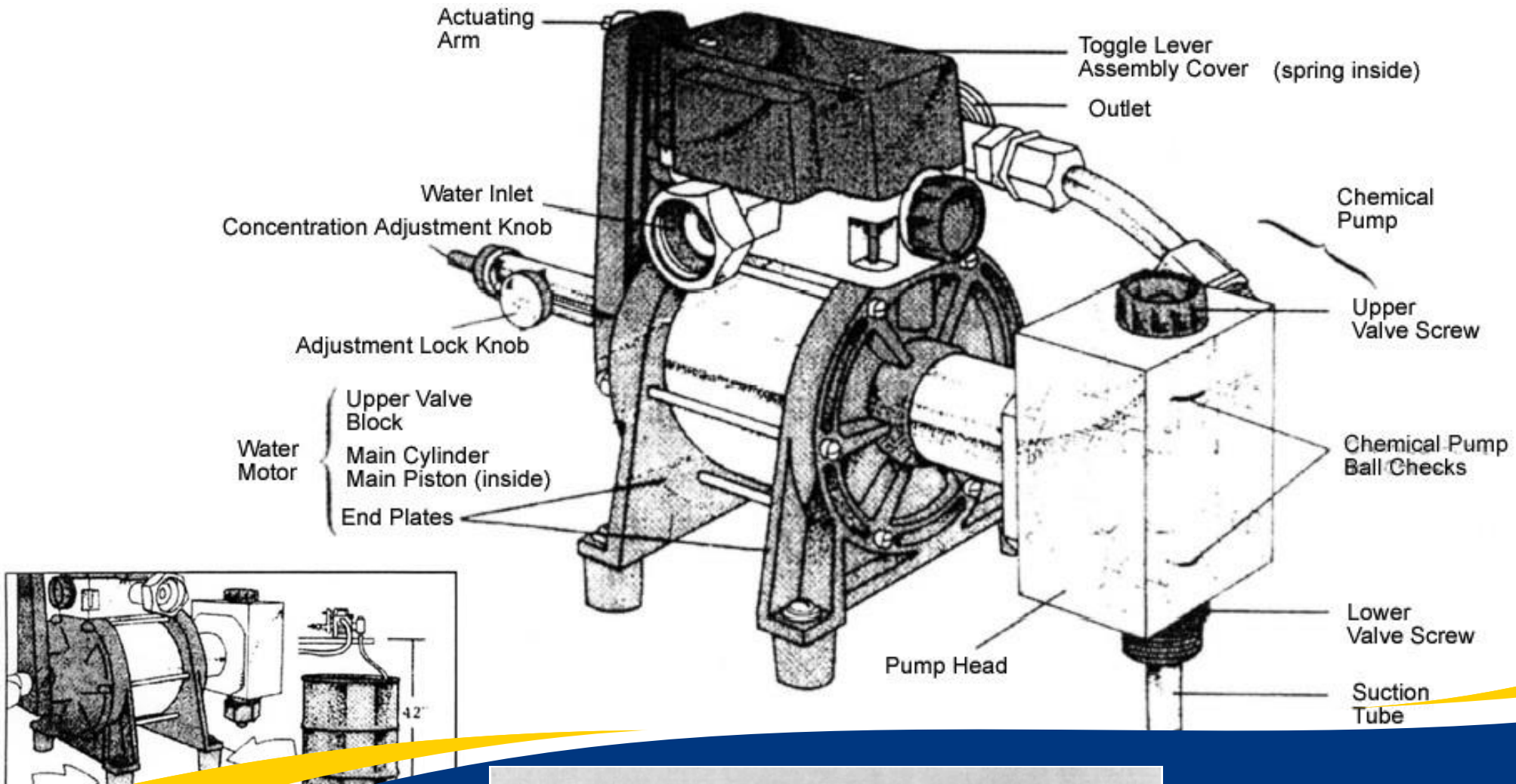


# Pump Support



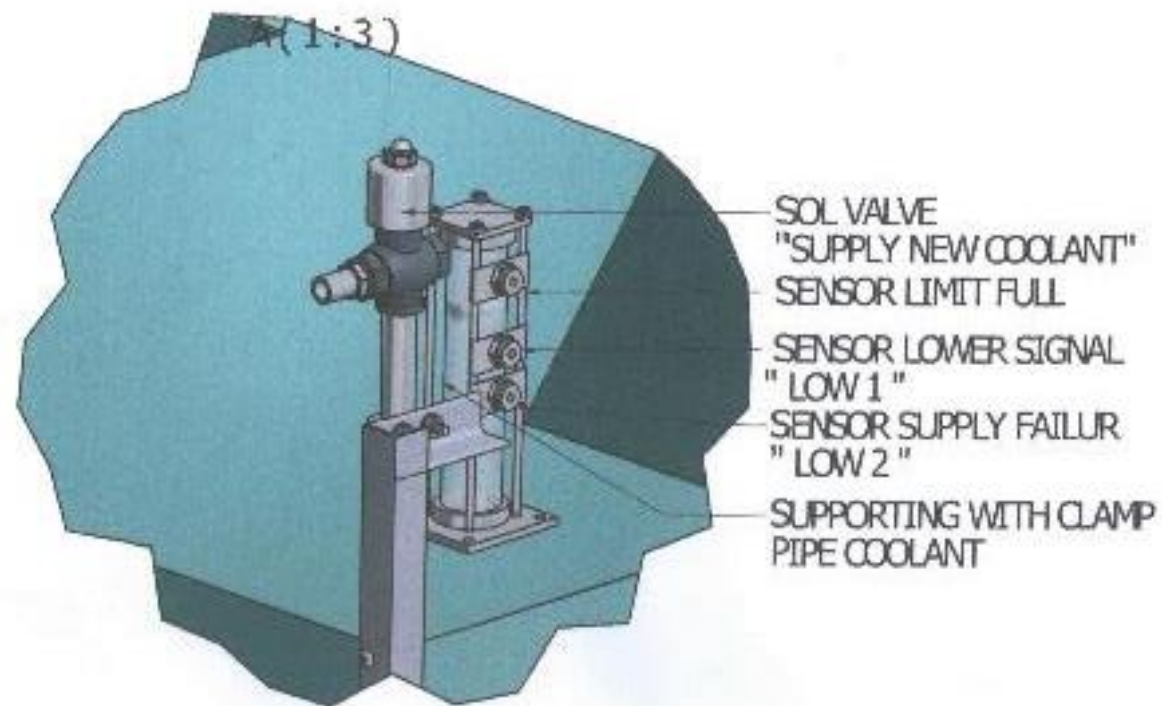
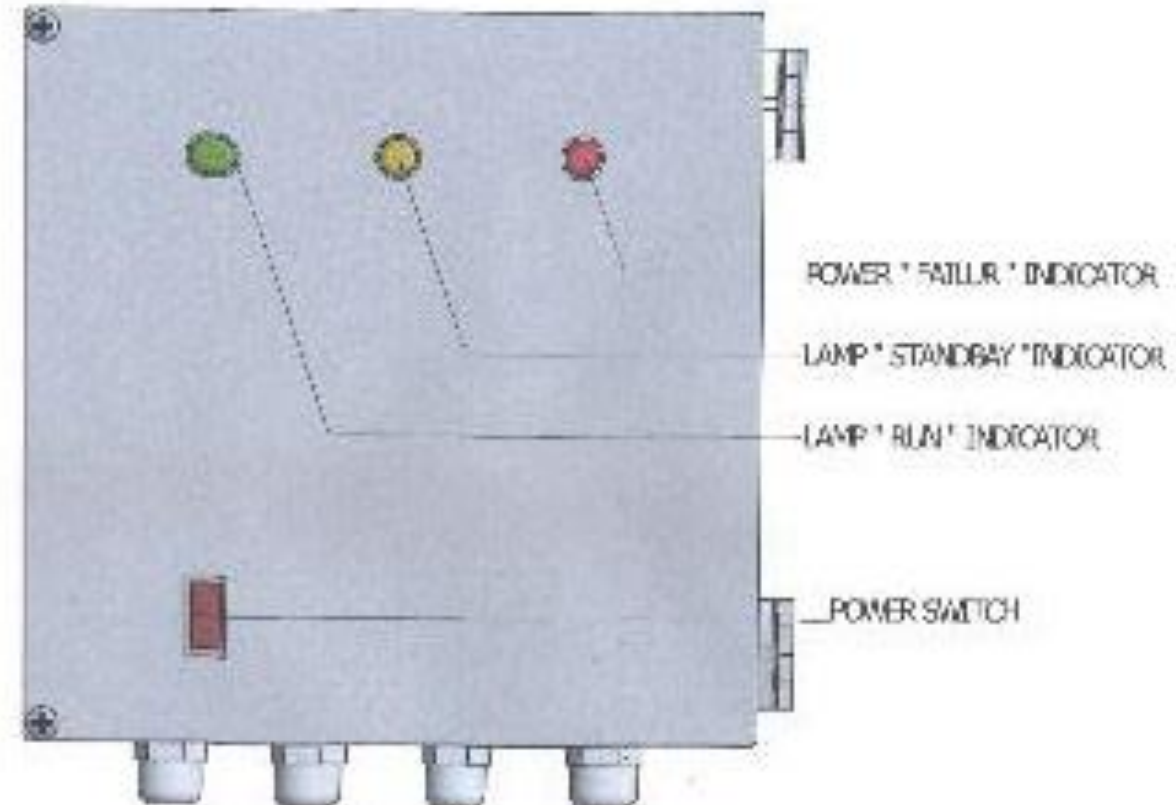
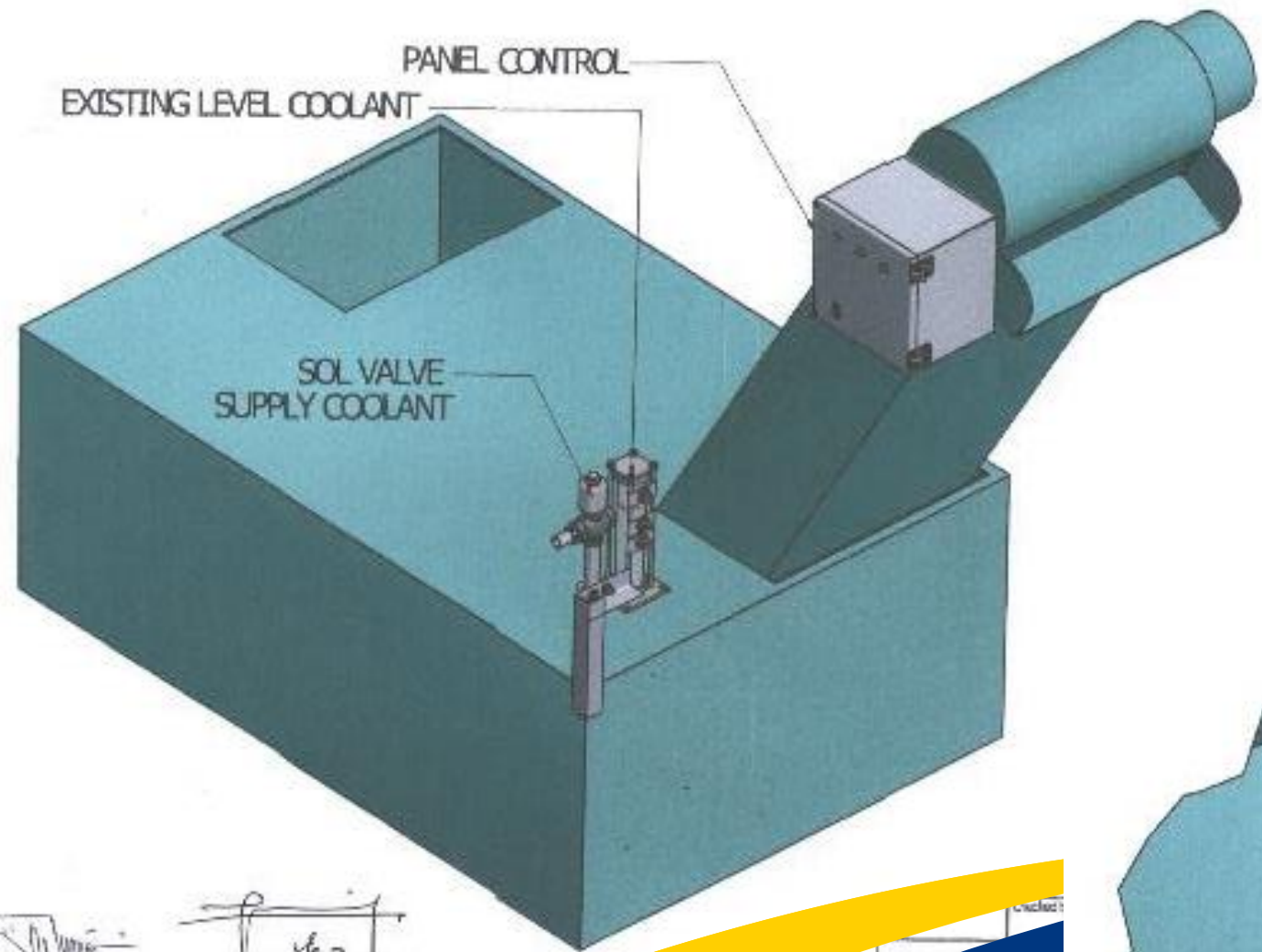
980 Oils®

# Zebra Proportional Pump





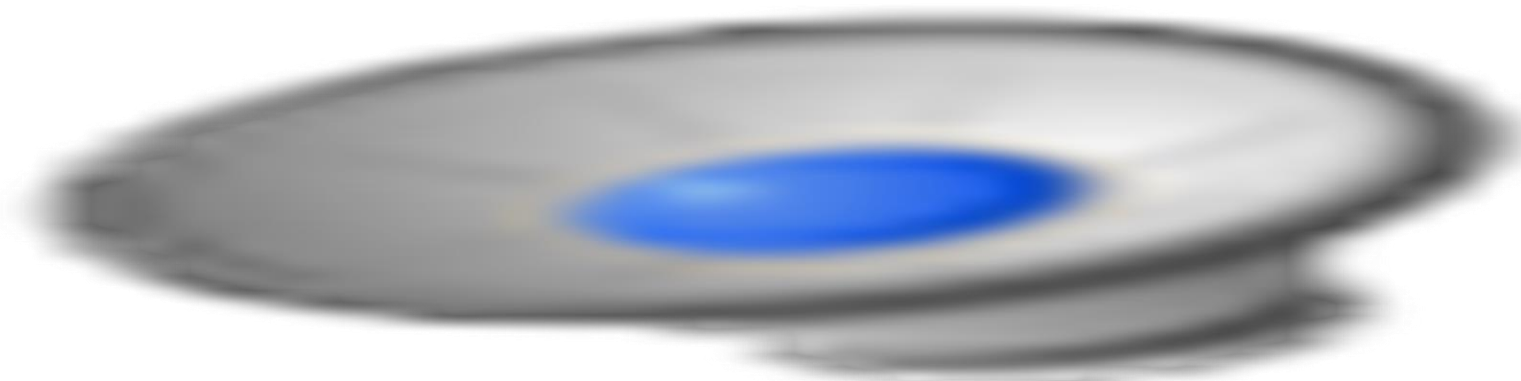
# Auto Controller





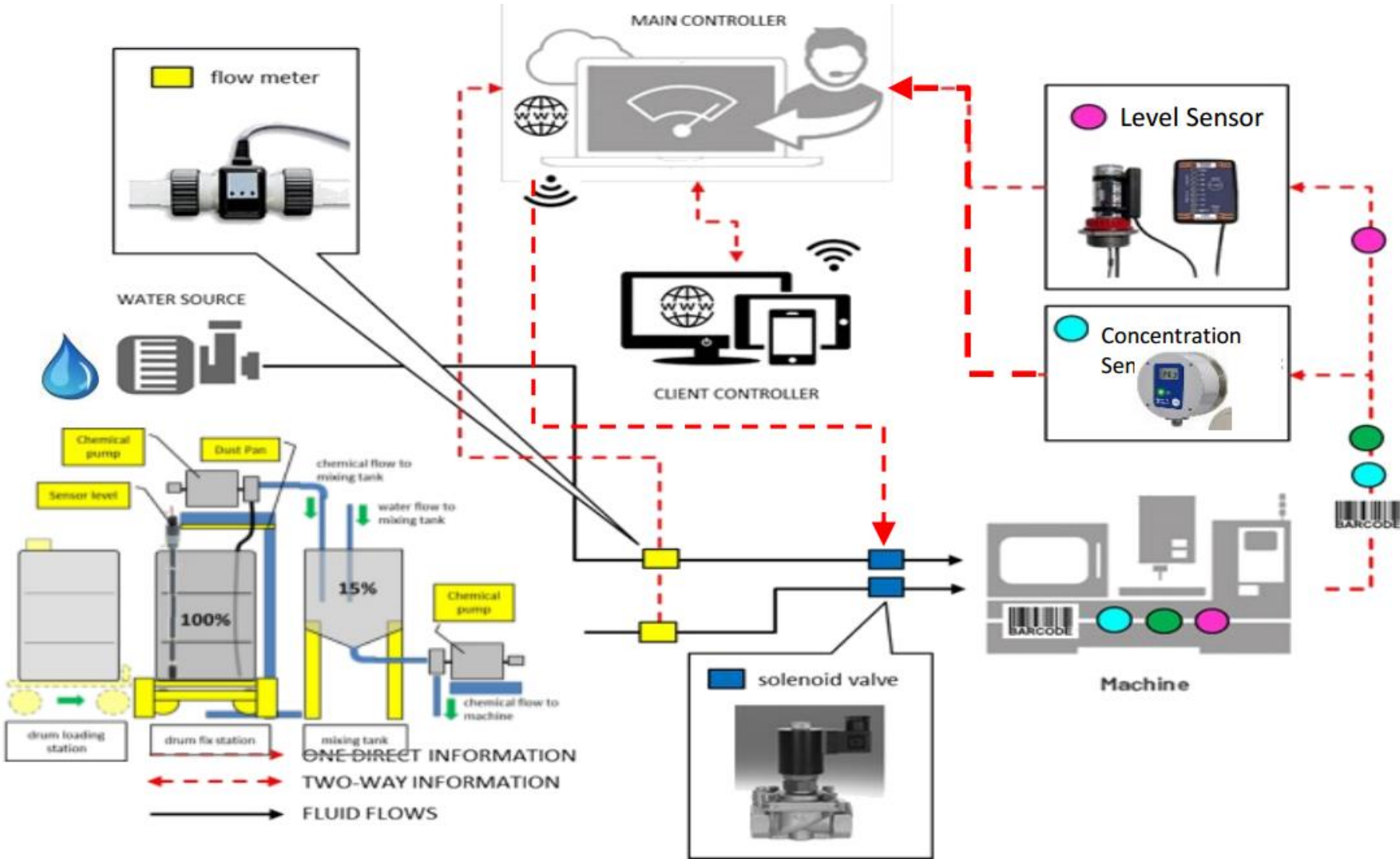
# References

---



# Randomix 4.0

## Auto top up next level



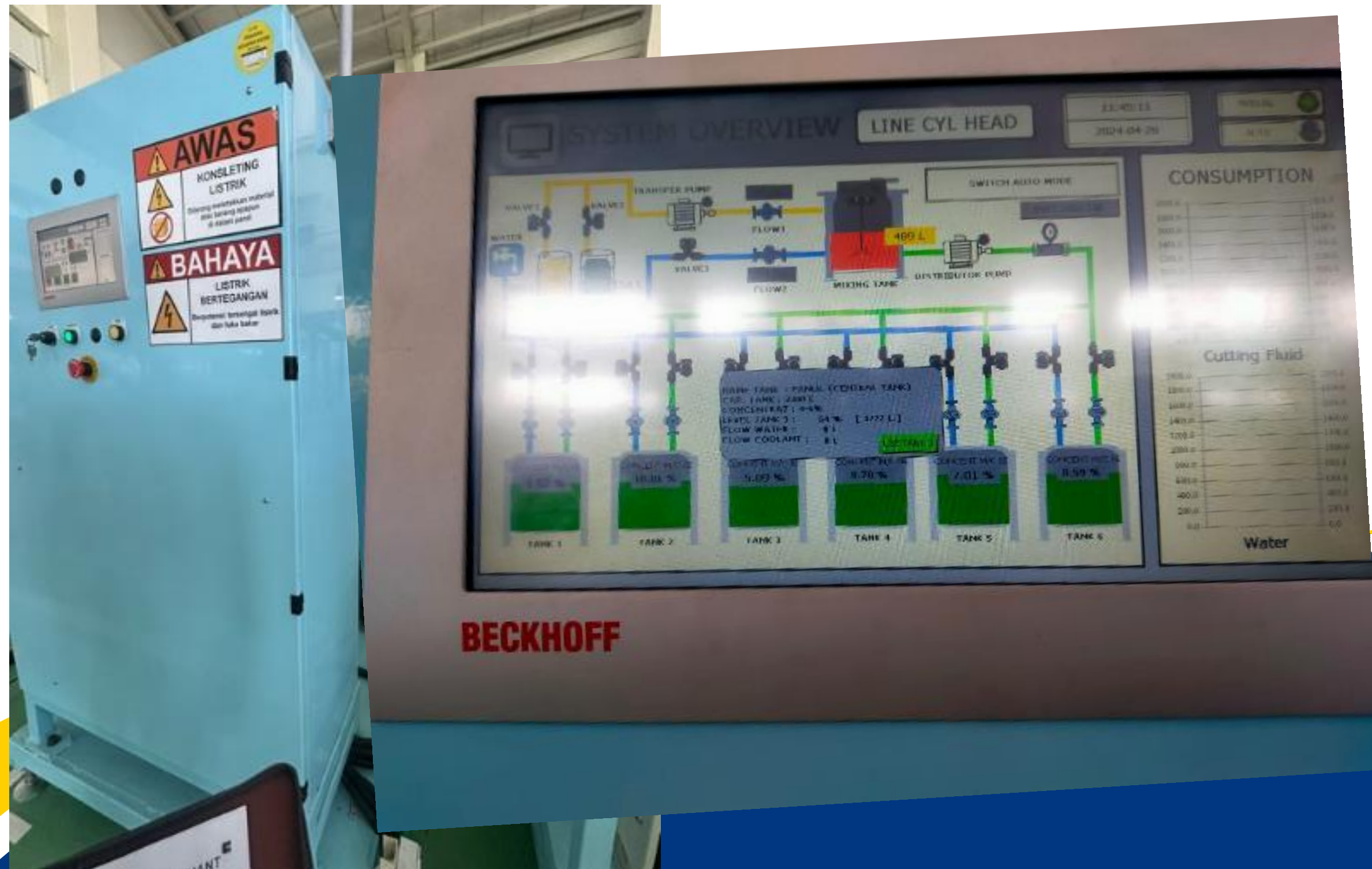
# Central Tank



98015<sup>®</sup>



# Dashboard





# Controller in Machine



